

# 椭圆形磁粉芯

## Ellipse Cores

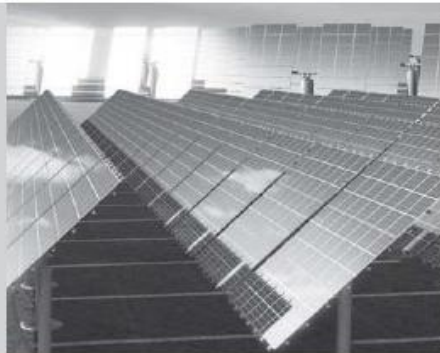


### 特点

- 比长方形磁粉芯所用铜线长度更短
- 极好的DC Bias 特性
- 储能量大
- 高频率下的低磁损

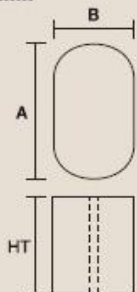
### 应用范围

- 太阳能逆变器的Choke过滤器
- 太阳能逆变器用的Boost Inductor



## 产品识别

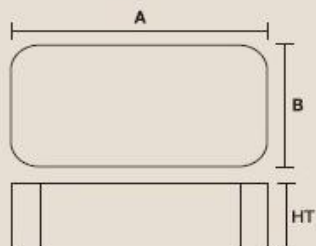
### · Column



### LK 35 15 - 20 C

磁导率: <b>60<math>\mu</math></b>	有效磁导率 26,40,60 $\mu$
高度: <b>20mm</b>	适用尺寸: 20mm~25mm
宽度: <b>15mm</b>	
长度: <b>35mm</b>	
<b>Mega Flux<sup>®</sup> Ellipse Core</b>	LK: Mega Flux <sup>®</sup> , LS: Sendust

### · Plate



### LK 60 35 - 13 C

磁导率: <b>60<math>\mu</math></b>	有效磁导率 26,40,60 $\mu$
高度: <b>13mm</b>	Available size: 13mm~18mm
宽度: <b>35mm</b>	
长度: <b>60mm</b>	
<b>Ellipse Core</b>	LK: Mega Flux <sup>®</sup>

**(1) Posts**

MEGA FLUX : LK3520-20C → L=ELLIPSE CORE, K=Mega Flux, 35=A(Length), 20=B(Width), 20=D(Height), C=Perm. 60u

Part NO.	Dimensions				Cross	PLATE
					Section	
	A	B	RC	D	Area(cm²)	
	Length	Width	Radius	Height		
	(mm)	(mm)	(mm)	(mm)		
LK3515-20	35.3±0.3	15.2±0.2	7.5±0.2	20±0.2	4.77	LK5035-13 LK6035-13
LK3515-25	35.3±0.3	15.2±0.2	7.5±0.2	25±0.2	4.77	LK7035-13
LK3520-20	35.3±0.3	20.2±0.2	7.5±0.2	20±0.2	6.52	LK5035-18 LK6035-18
LK3520-25	35.3±0.3	20.2±0.2	7.5±0.2	25±0.2	6.52	LK7035-18

**(2) Plates**

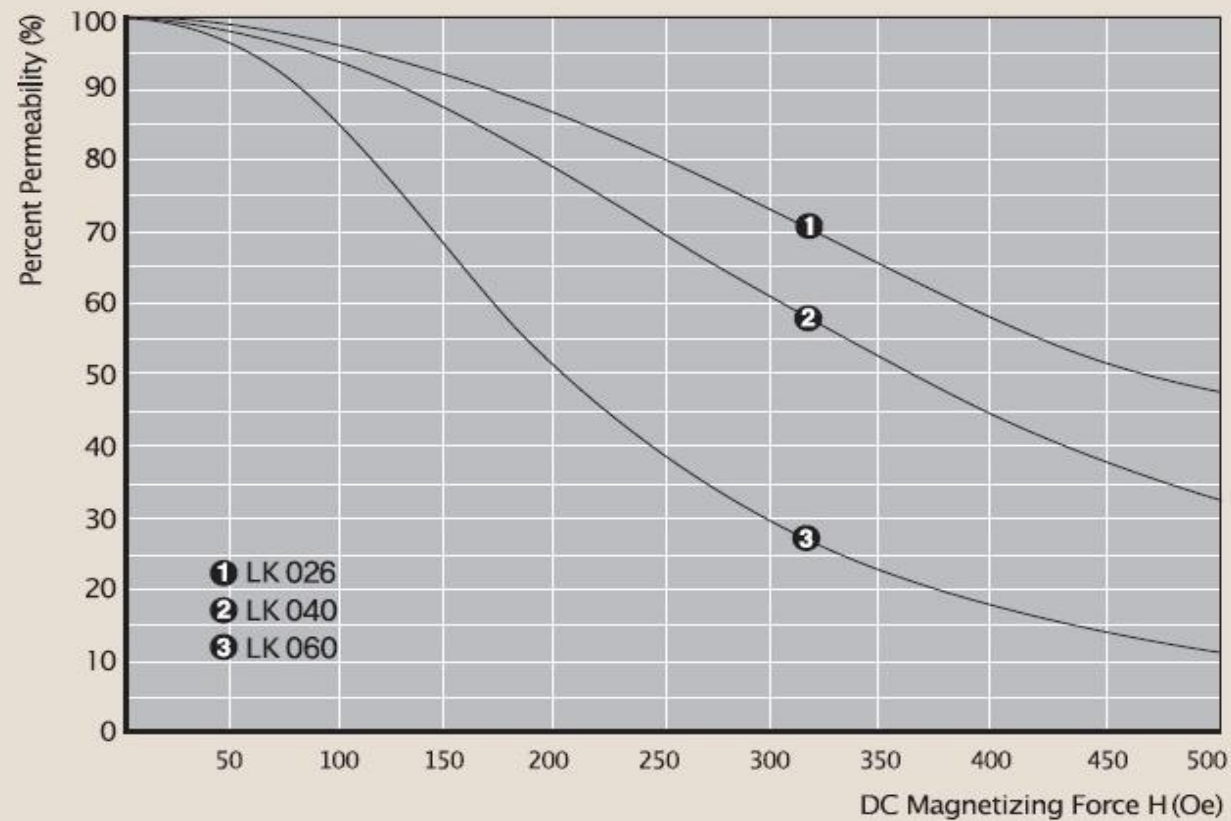
MEGA FLUX : LK7035-13C → L=ELLIPSE CORE, K=Mega Flux, 70=A(Length), 35=B(Width), 13=D(Height), C=Perm. 60u

Part NO.	Dimensions				Cross	POST
					Section	
	A	B	RC	D	Area(cm²)	
	Length	Width	Radius	Height		
	(mm)	(mm)	(mm)	(mm)		
LK5035-13	50.5±0.5	35.3±0.3	7.5±0.2	13.5±0.2	4.77	LK3515-20, 25
LK5035-18	50.5±0.5	35.3±0.3	7.5±0.2	18.5±0.2	6.52	LK3520-20, 25
LK6035-13	60.5±0.5	35.3±0.3	7.5±0.2	13.5±0.2	4.77	LK3515-20, 25
LK6035-18	60.5±0.5	35.3±0.3	7.5±0.2	18.5±0.2	6.52	LK3520-20, 25
LK7035-13	60.5±0.5	35.3±0.3	7.5±0.2	13.5±0.2	4.77	LK3515-20, 25
LK7035-18	70.5±0.5	35.3±0.3	7.5±0.2	18.5±0.2	6.52	LK3520-20, 25

## ■ 椭圆形磁粉芯组装例图



## ■ 磁导率 vs DC Bias 曲线



(3) ASSEMBLING

Part NO.	Post		Dimensions					Path Length (cm)	Section Area (cm <sup>2</sup> )	Window Area (cm <sup>2</sup> )	AL value (nH/n <sup>2</sup> )±12%		
	Part NO.	1 LEG STACK	A Length (mm)	B Width (mm)	C Height (mm)	D Inner Height (mm)	E Inner Length (mm)				026μ	040μ	060μ
LK 5035-13	LK3515-20	2	50.5±0.5	35.3±0.3	67.0±0.5	40.0±0.4	20.0±0.4	16.47	4.77	8	113	146	218
	LK3515-25	2	50.5±0.5	35.3±0.3	77.0±0.5	50.0±0.4	20.0±0.4	18.47	4.77	10	101	130	195
	LK3515-20	3	50.5±0.5	35.3±0.3	87.0±0.5	60.0±0.4	20.0±0.4	20.47	4.77	12	91	117	176
LK 5035-18	LK3515-20	2	50.5±0.5	35.3±0.3	77.0±0.5	40.0±0.4	10.0±0.4	16.04	6.52	4	158	204	306
	LK3515-25	2	50.5±0.5	35.3±0.3	87.0±0.5	50.0±0.4	10.0±0.4	18.04	6.52	5	141	182	273
	LK3515-20	3	50.5±0.5	35.3±0.3	97.0±0.5	60.0±0.4	10.0±0.4	20.04	6.52	6	127	164	245
LK 6035-13	LK3515-20	2	60.5±0.5	35.3±0.3	67.0±0.5	40.0±0.4	30.0±0.4	18.47	4.77	12	101	130	195
	LK3515-25	2	60.5±0.5	35.3±0.3	77.0±0.5	50.0±0.4	30.0±0.4	20.47	4.77	15	91	117	176
	LK3515-20	3	60.5±0.5	35.3±0.3	87.0±0.5	60.0±0.4	30.0±0.4	22.47	4.77	18	83	107	160
LK 6035-18	LK3520-20	2	60.5±0.5	35.3±0.3	77.0±0.5	40.0±0.4	20.0±0.4	18.04	6.52	8	141	182	273
	LK3520-25	2	60.5±0.5	35.3±0.3	87.0±0.5	50.0±0.4	20.0±0.4	20.04	6.52	10	127	164	245
	LK3520-20	3	60.5±0.5	35.3±0.3	97.0±0.5	60.0±0.4	20.0±0.4	22.04	6.52	12	115	149	223
LK 7035-13	LK3515-20	2	70.5±0.5	35.3±0.3	67.0±0.5	40.0±0.4	40.0±0.4	20.47	4.77	16	91	117	176
	LK3515-25	2	70.5±0.5	35.3±0.3	77.0±0.5	50.0±0.4	40.0±0.4	22.47	4.77	20	83	107	160
	LK3515-20	3	70.5±0.5	35.3±0.3	87.0±0.5	60.0±0.4	40.0±0.4	24.47	4.77	24	76	98	147
LK 7035-18	LK3520-20	2	70.5±0.5	35.3±0.3	77.0±0.5	40.0±0.4	30.0±0.4	20.04	6.52	12	127	164	245
	LK3520-25	2	70.5±0.5	35.3±0.3	87.0±0.5	50.0±0.4	30.0±0.4	22.04	6.52	15	115	149	223
	LK3520-20	3	70.5±0.5	35.3±0.3	97.0±0.5	60.0±0.4	30.0±0.4	24.04	6.52	18	106	136	204